



14 Pentelis Ave  
Limassol



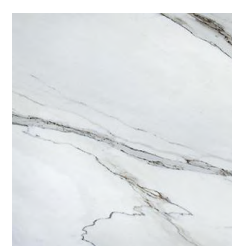
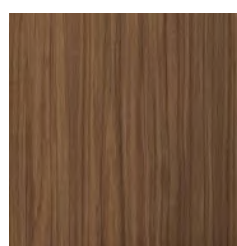
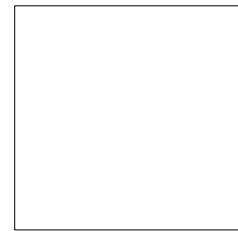
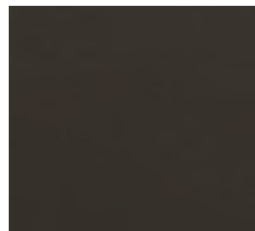
# Revised layout

<p>FLOOR_MARBLE</p> 	<p>WORKTOP_ATLAS "BOOST WHITE"</p> 	<p>KITCHEN_UNITS "S06 AMANI LIGHT"</p> 	<p>GLASS_WALL_UNITS "BRONZE REFLECTIVE"</p> 	<p>SELECTA "BASALTO 920"</p> 	<p>SELECTA "ROVERE CARBONE"</p> 
--	--	--	---	--	---

# Concept

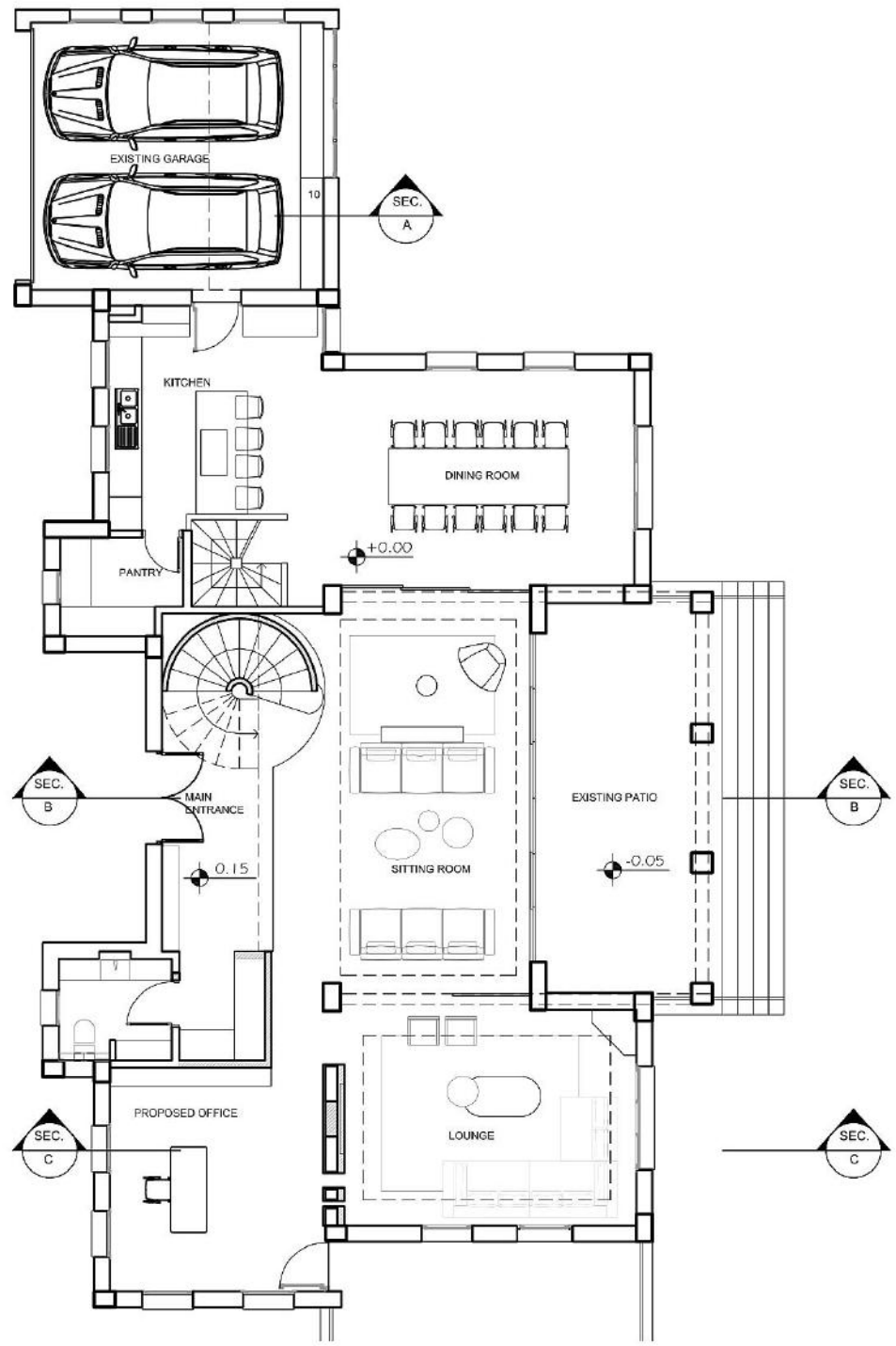
- ◇ creating clean functional spaces & easy flow of movement.
- ◇ Neutral & earthy colors & textures, creating a more sophisticated and contemporary space.
- ◇ comfortable, ergonomic, pleasant.
- ◇ Addressing problem areas and re-identifying spatial requirements.
- ◇ Unification of elements, spatial connectivity/ visual barriers, hierarchy and order of space.

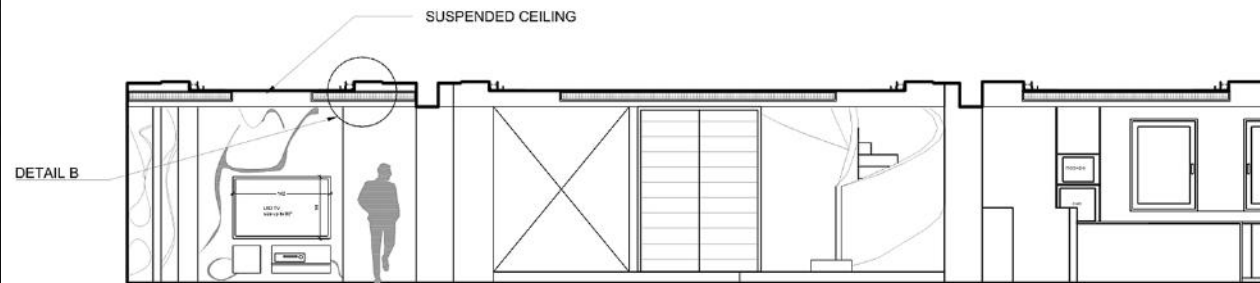
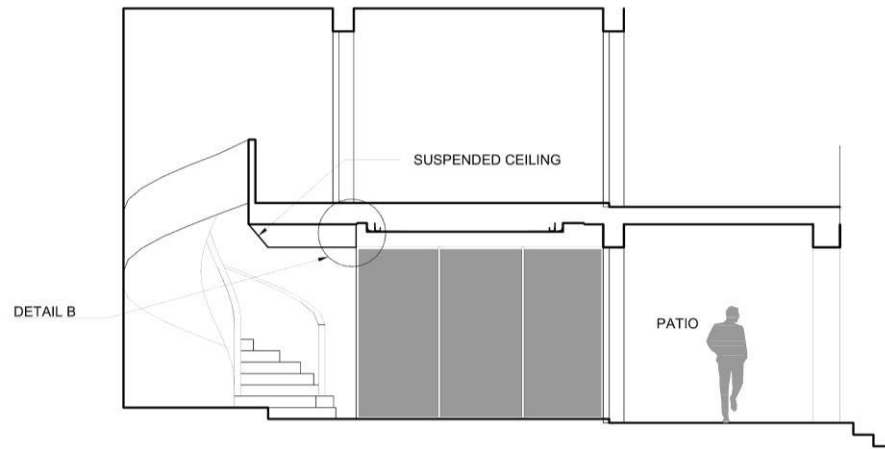
# Colors, textures





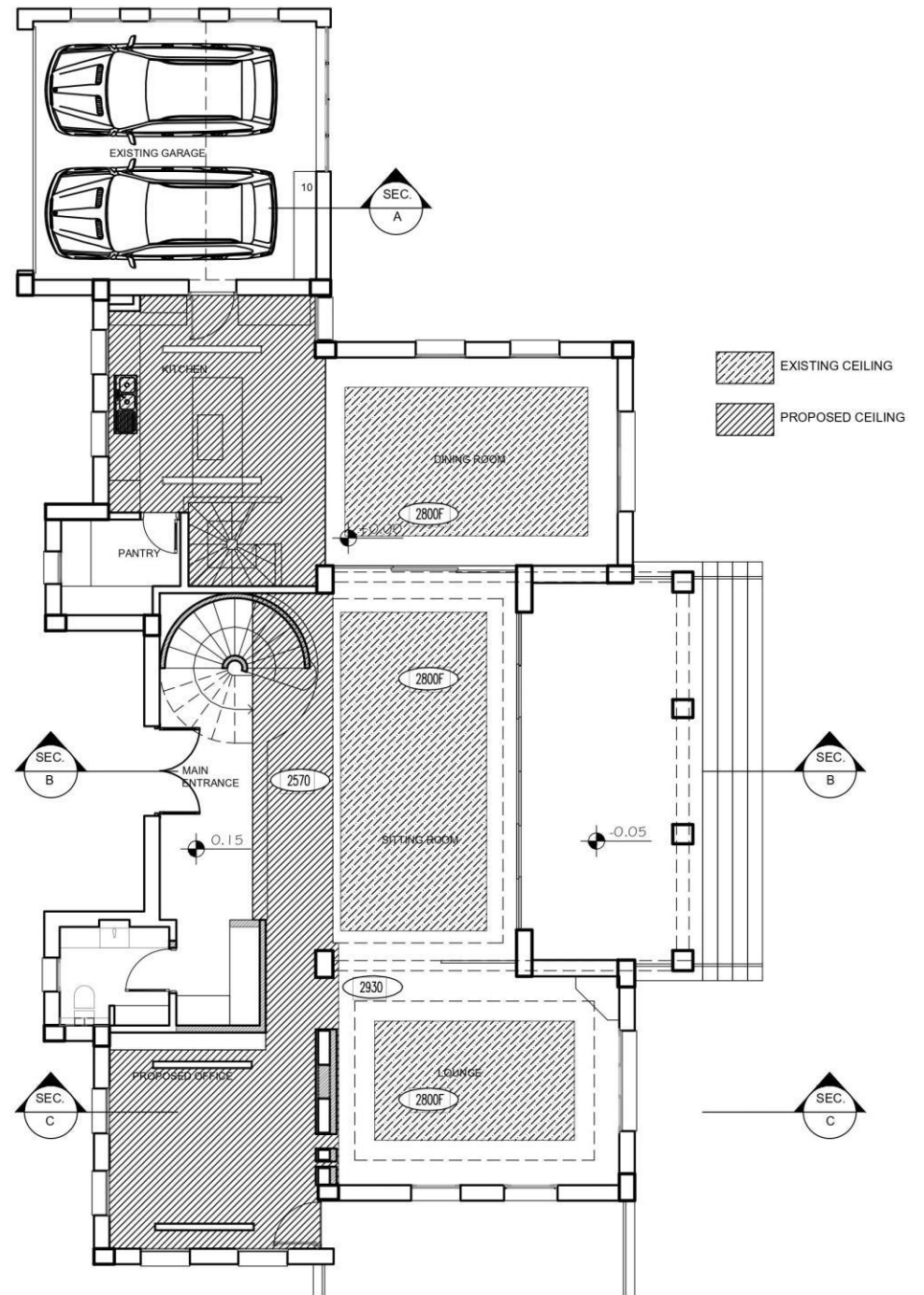
# Ground floor

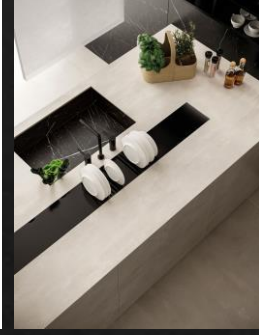




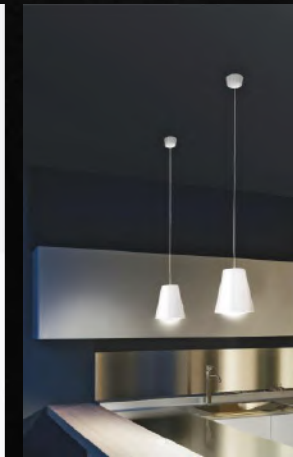
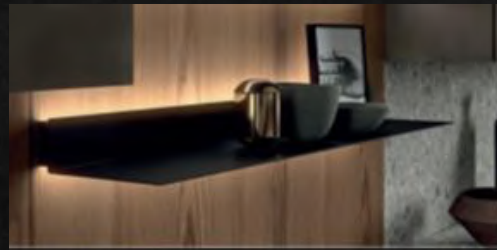
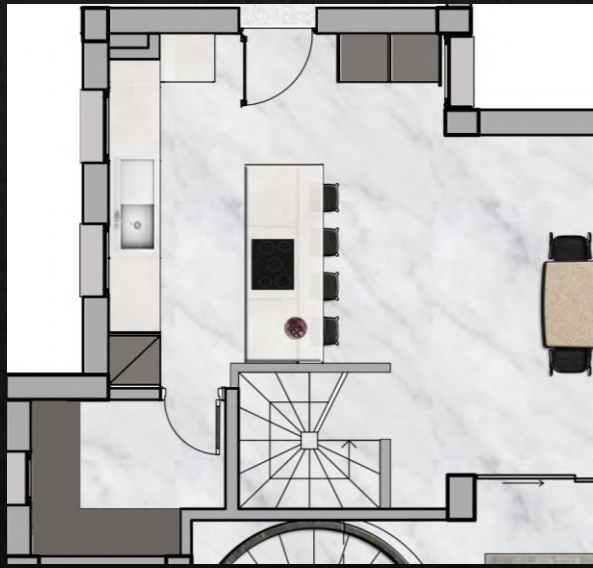
Sections B-B, C-C

# Ceiling layout

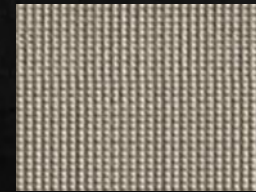
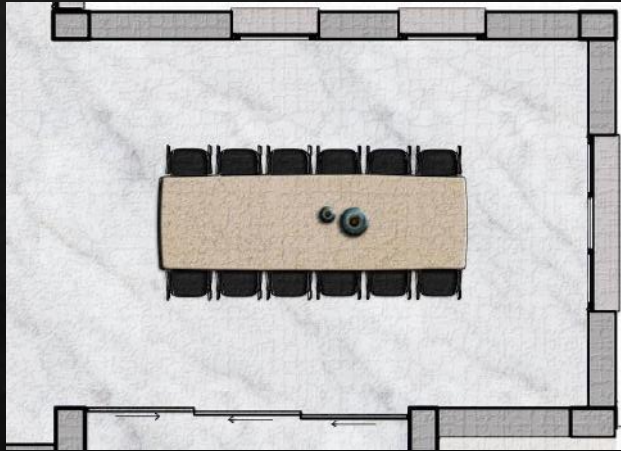




Kitchen/ pantry

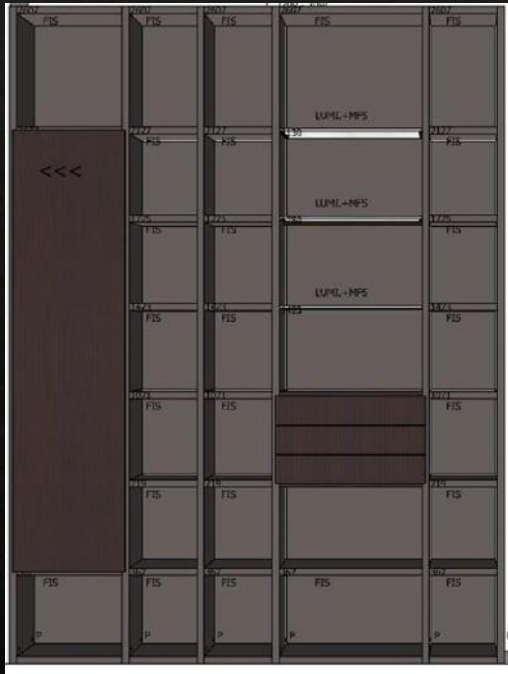
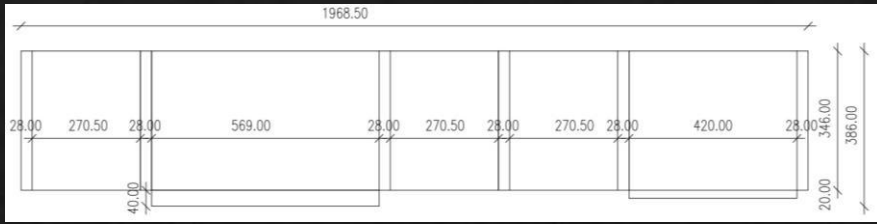




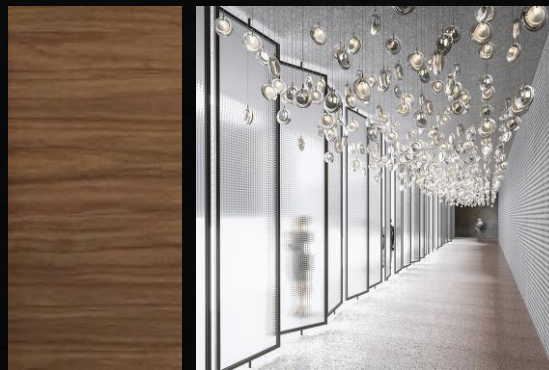
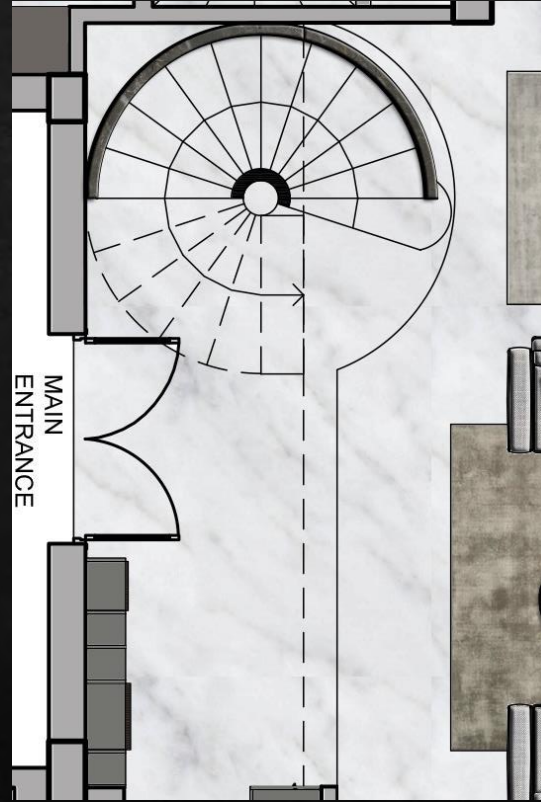


Dining





Entrance & stairs

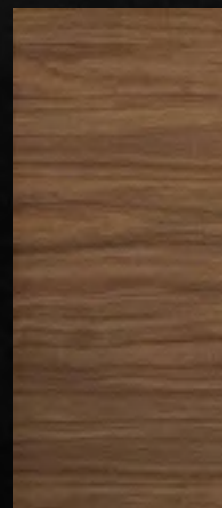
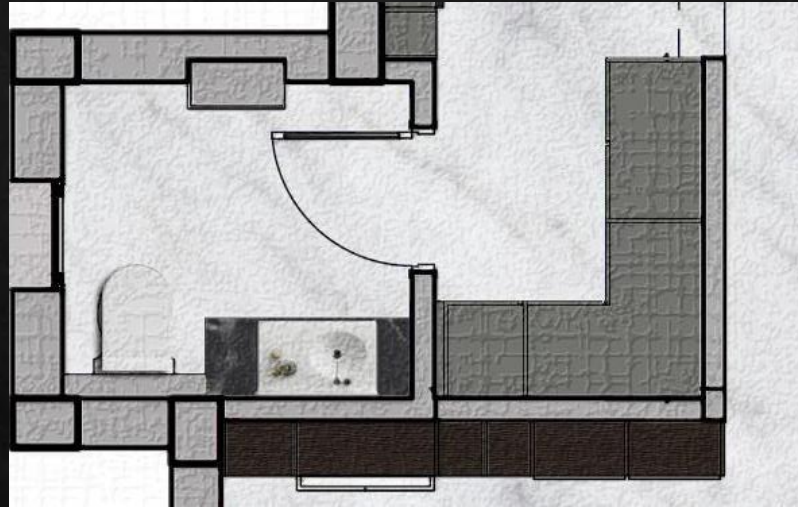
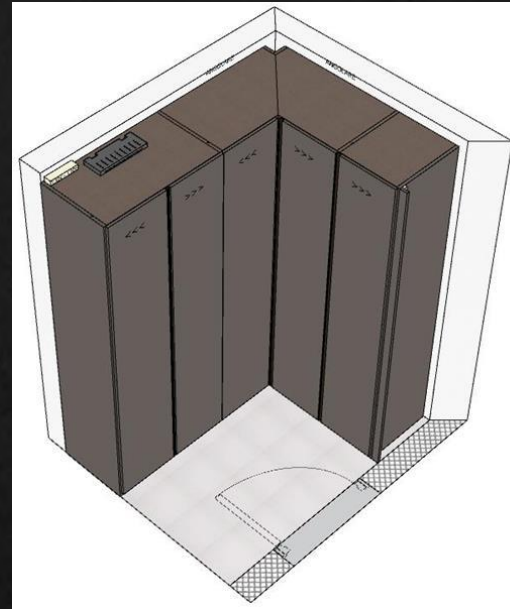
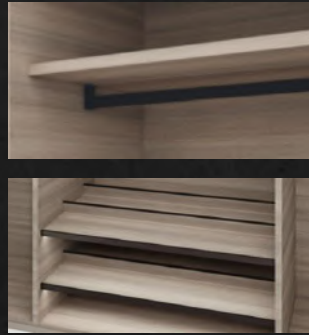




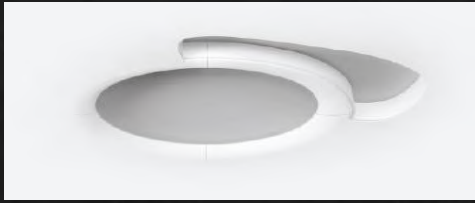
32 & 33.



Guest wc & cloaks cupboard





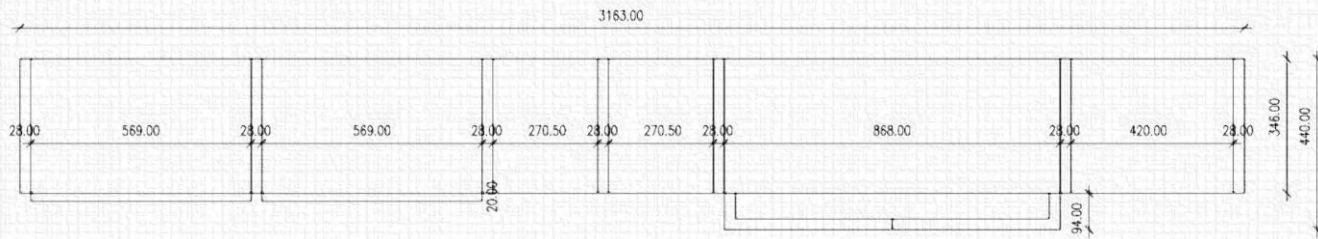


Sitting room





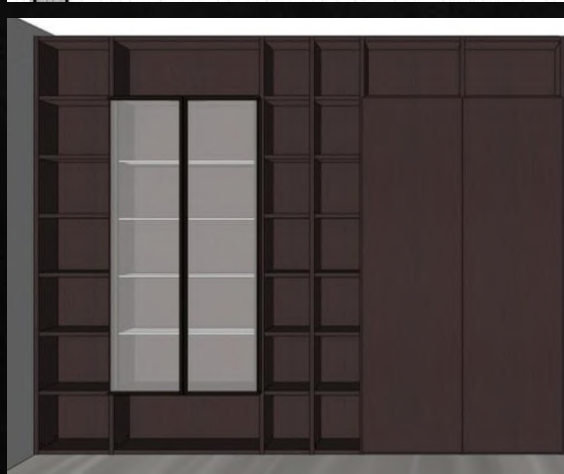
OFFICE\_BY LEMA\_SELECTA\_W.3163X h.2498 X d.443mm



SELECTA  
"ROVERE CARBONE"  
ONLY DRAWERS AND DOOR

SELECTA  
"TRANSPARENT GLASS"  
GLASS FLOORS  
& 4 SHELVES WITH LED LIGHT

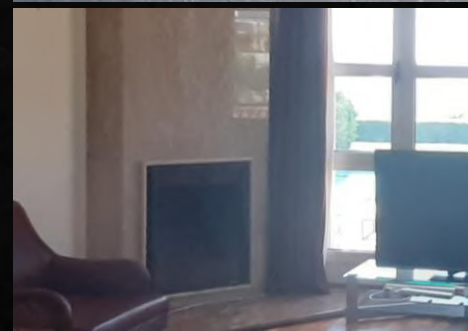
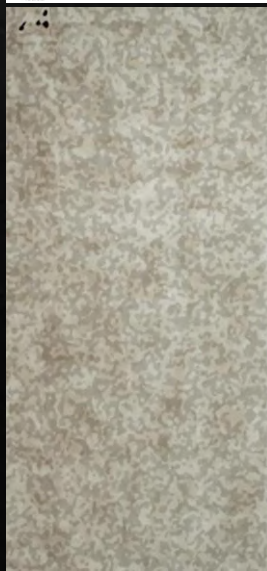
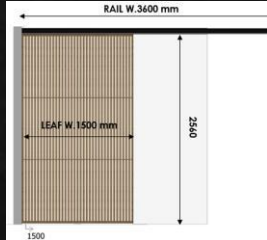
Office







Living room



3D



















Virtual walk through: [https://studio3dprojects.shapespark.com/gs\\_pr1/](https://studio3dprojects.shapespark.com/gs_pr1/)



GEORGE SYMEOU  
RIBA, B' Arch



Thank you !

A: P.O. Box 51523,3506,  
Limassol, Cyprus  
P: 99 359860, f: 25 431418  
e: [info@symeouarch.com](mailto:info@symeouarch.com)  
W: [www.symeouarch.com](http://www.symeouarch.com)